

HOUSE & GARDEN

JANUARY
2011
£3.80

PARTY PLANNING

*UK house-party
venues, exotic
recipes, smart
table linen, chic
thank-you cards*

THE DEFINITIVE GUIDE TO STYLISH LIVING

**THE H&G
GUIDE TO
THE LEADING
GARDEN
DESIGNERS**

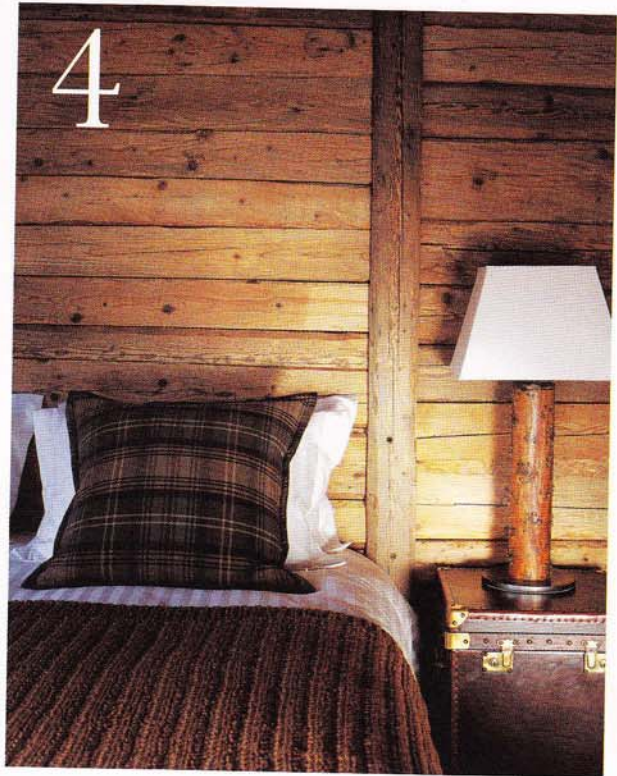
THE professionals

**WE LOOK INSIDE THE
HOMES OF A TEXTILES LEGEND,
A GALLERIST, AN ANTIQUES DEALER
AND A YACHT DESIGNER**

IMPORTANT DETAILS

**PERFECT LAMPSHADES
EMBOSSSED LEATHER
DECORATIVE INLAY**



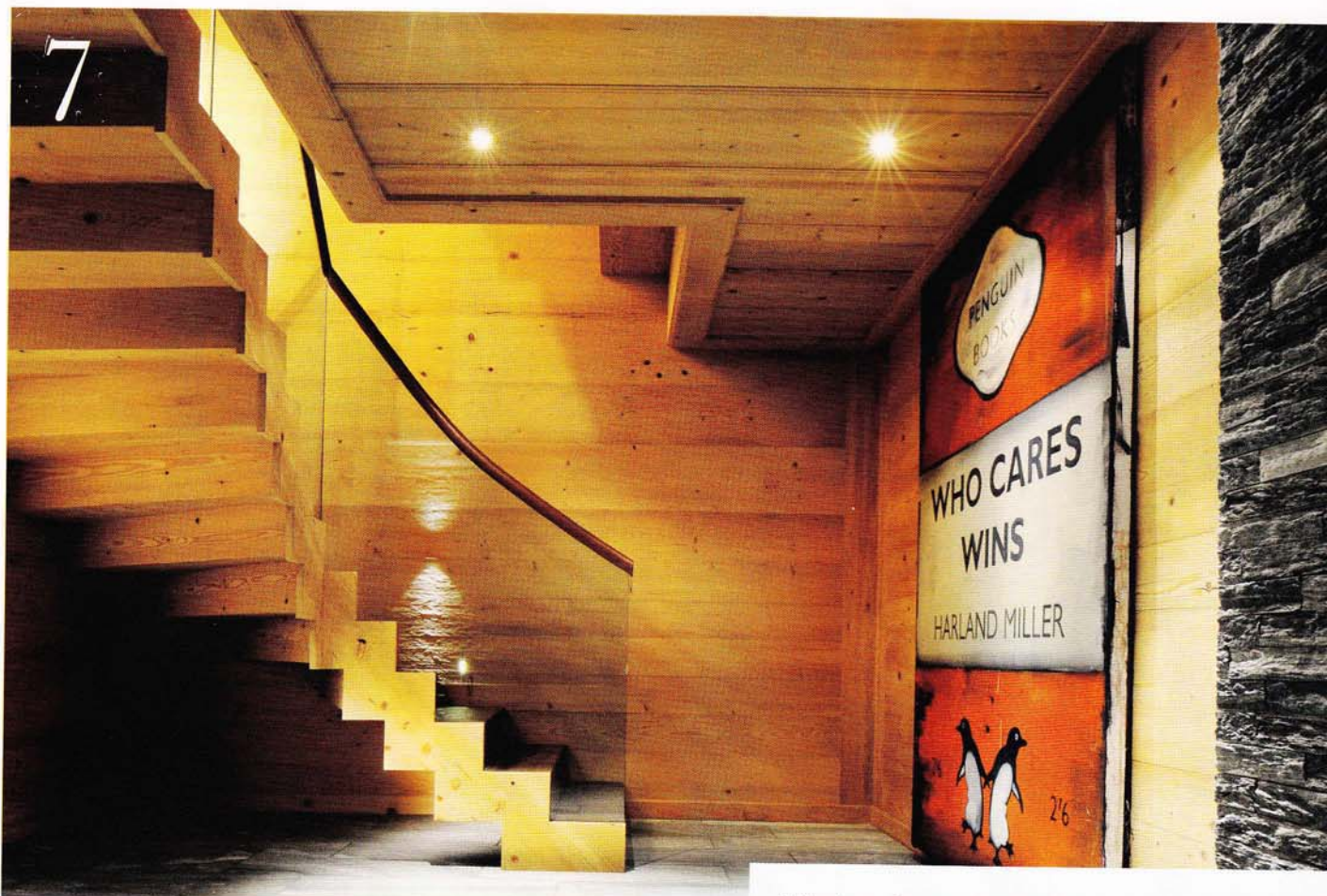


4 Reclaimed-timber walls harmonise with the earthy tones of the leather trunk-cum-bedside table, vintage lamp, cushion and blanket in this chalet bedroom decorated by Nicky Dobree.

5 This scrub-oak spiral staircase in an Aspen mountain lodge creates a strong, visual link with the surrounding forest.

6 In the hallway of her chalet in Gstaad, interior designer Alexandra de Pfyffer has produced an unusual and sophisticated effect by combining stained pine and grey paint. ▷





7 Modern art can work well in chalets, as Tara Bernerd shows in the entrance hall, which has a modern wood-and-glass staircase and a wall of Harland Miller's spoof paintings of Penguin book covers.

8 A table based on a design by Pugin, with wing chairs at both ends and a pair of antler chandeliers above, makes a dramatic statement in the dining room of a chalet designed by Nicky Dobree. ▷

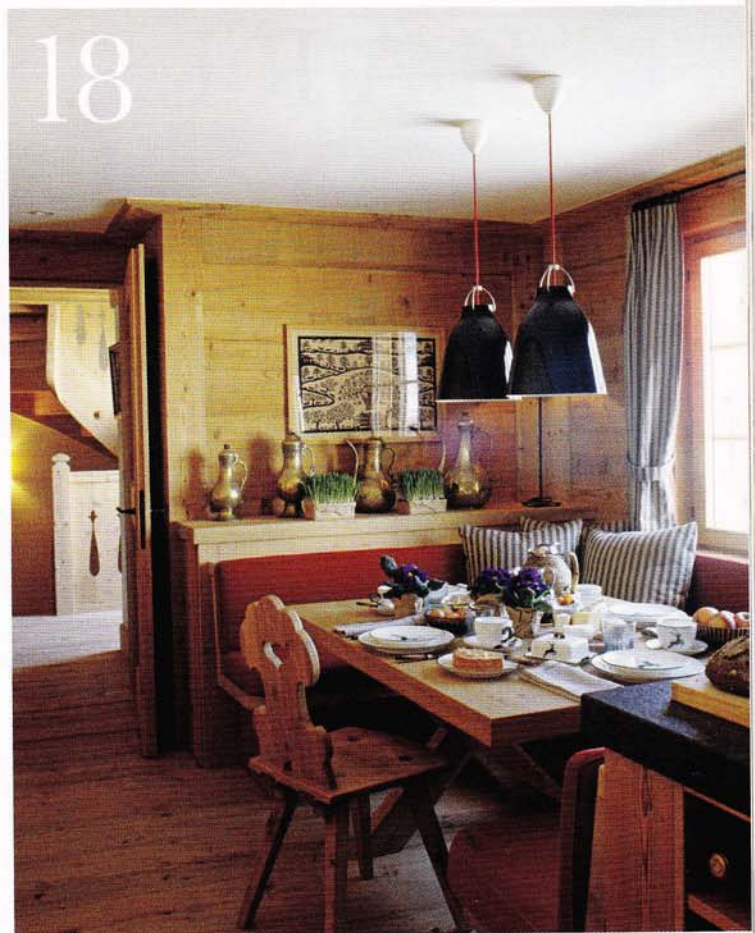
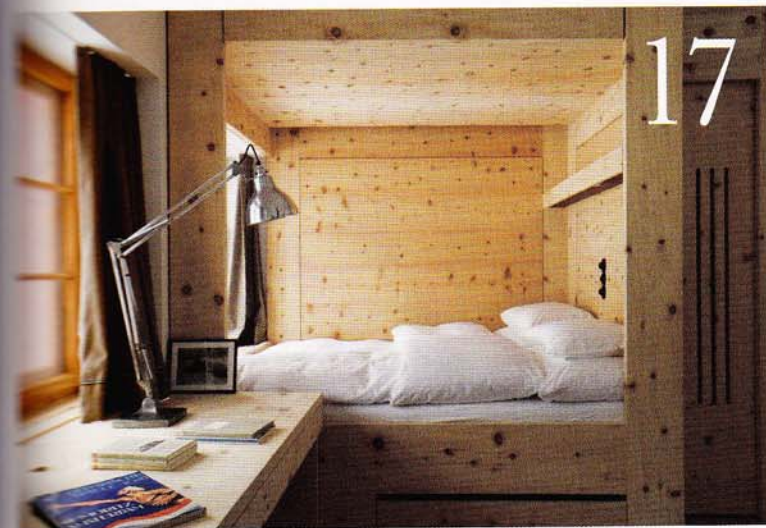


15 Architect Tim Greene subtly updated this log cabin in North Carolina by enlarging existing windows and adding new ones to bring in air and light. The rustic decoration, which is in a muted palette to complement the rough pine walls, is by interior designer Amelia Handegan.

16 A well-considered bathroom aids relaxation after a hard day's skiing. This smart example by Nicky Dobree mixes traditional stained pine with dark grey ceramic flooring and wall tiles, and luxurious details, such as black leather cupboard-door handles.

17 A built-in bed and desk in untreated pine, designed by Rolf Sachs for his own house, is fresh and modern. Simple accessories complete the look.

18 Geraldine and Monika Apponyi have used red cashmere bench cushions, stripy curtains and black-lacquer pendant lights to give this built-in dining area a cosy, yet stylish appearance □



USEFUL CONTACTS

Alexandra de Pfyffer, ADP Decoration 00-41-22 707 1797;

www.adp-decoration.com

Amelia Handegan 00-1-843 722 9373;

www.athid.com

Christopher Adams and Henriette Salvesen, div.A architects 00-47-22 853 800; www.diva.no

Federica Palacios Design

00-41-22 310 2276;

www.federicapalaciosdesign.com

Geraldine and Monika Apponyi,

M M Design 020-7751 0171

Lars Bolander 00-1-561 835 4001;

www.larsbolander.com

Nicky Dobree 020-7627 0469;

www.nickydobree.com

Philippa Thorp, Thorp Design 020-7731

6887; www.thorp.co.uk

Rolf Sachs 020-7610 0777;

www.rolfsachs.com

Suzy Hoodless 020-7221 8844;

www.suzyhoodless.com

Tara Bernerd, Target Living

020-7351 7588; www.targetliving.com

Tim Greene 00-1-828 743 2968